

A New Social Compact To Achieve Optimal Health

**Association of University Programs
In Health Administration
Preconference Keynote
May 25, 2022**

Georges C. Benjamin, MD, MACP, FACEP (E), FNAPA
Executive Director
American Public Health Association



I have no financial disclosures or conflicts of interest with today's presented information



Health is a state
of complete physical,
mental, and social
well-being and
not merely the
absence of disease
or infirmity.



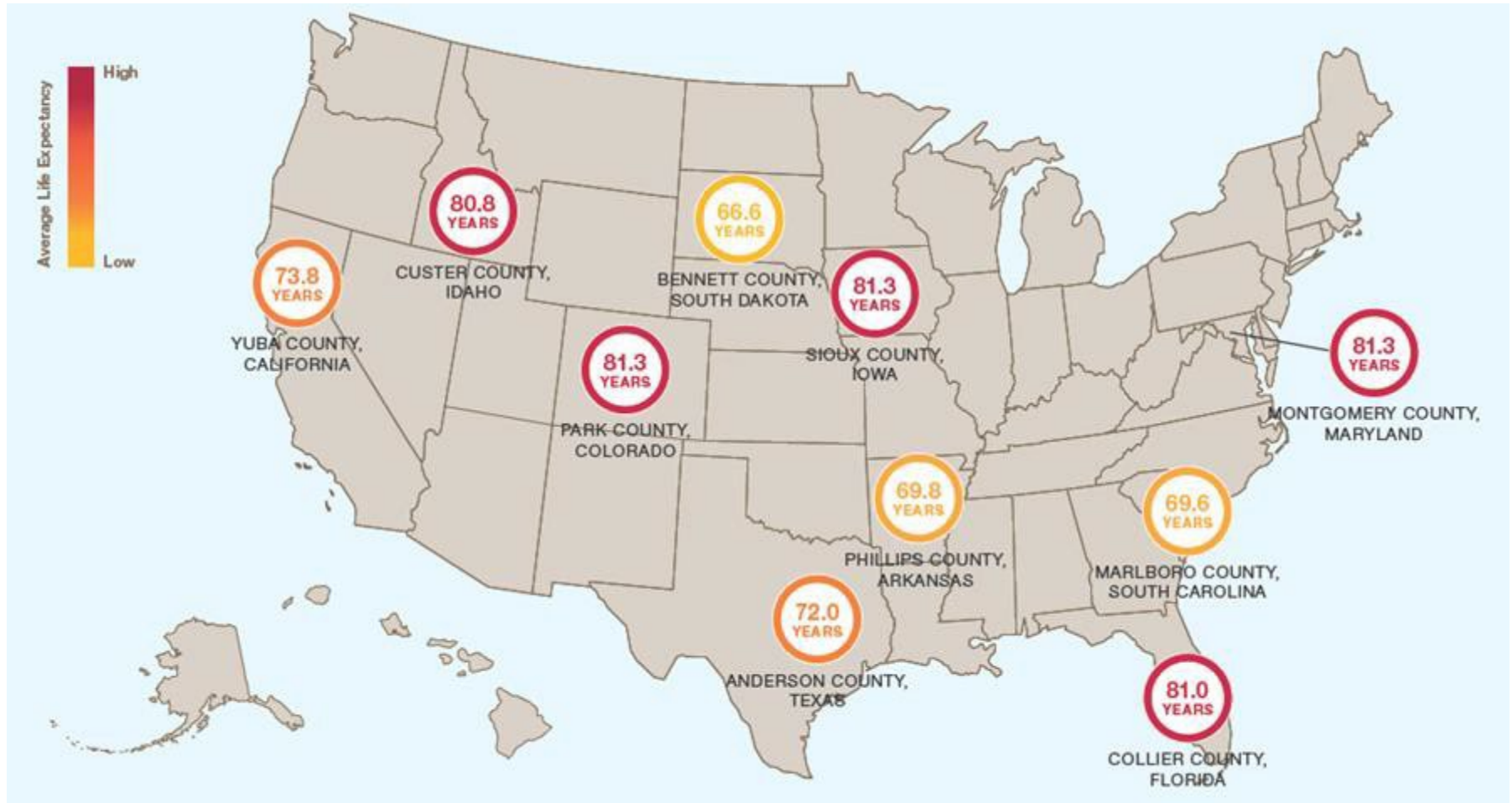
Health Equity Defined

“Health equity means that everyone has a fair and just opportunity to be as healthy as possible. This requires removing obstacles to health such as poverty, discrimination, and their consequences, including powerlessness and lack of access to good jobs with fair pay, quality education and housing, safe environments, and health care.”

Health Inequities Arise By

- 1. Differences in access to acute & chronic care**
- 2. Differences in the “quality” of care received**
- 3. Individual behavioral differences in approach to health or health care**
- 4. Differences in social, political, economic, or environmental exposures (Includes racism & other forms of discrimination)**

Differences In How Long & How Well We Live

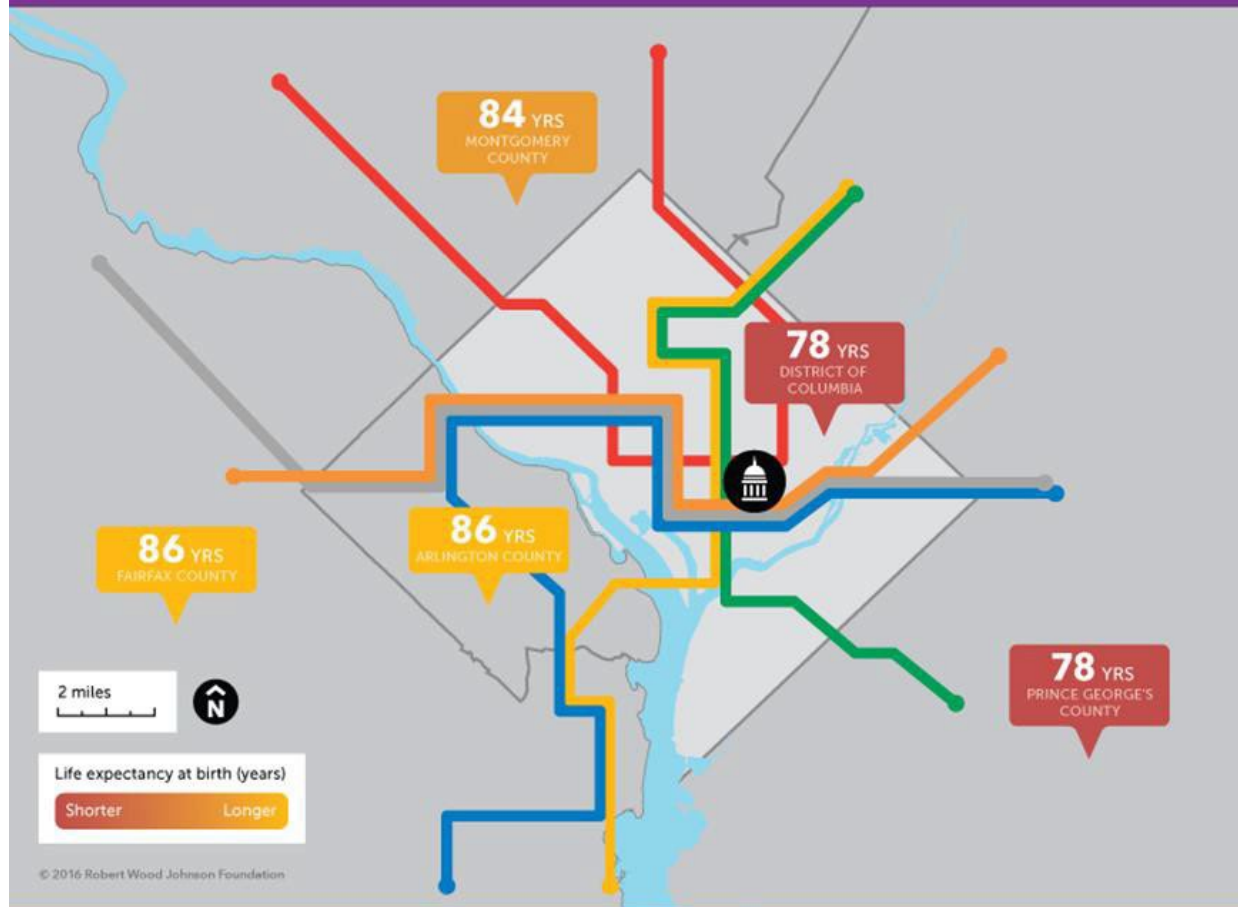


WASHINGTON, D.C.

Short Distances to Large Gaps in Health

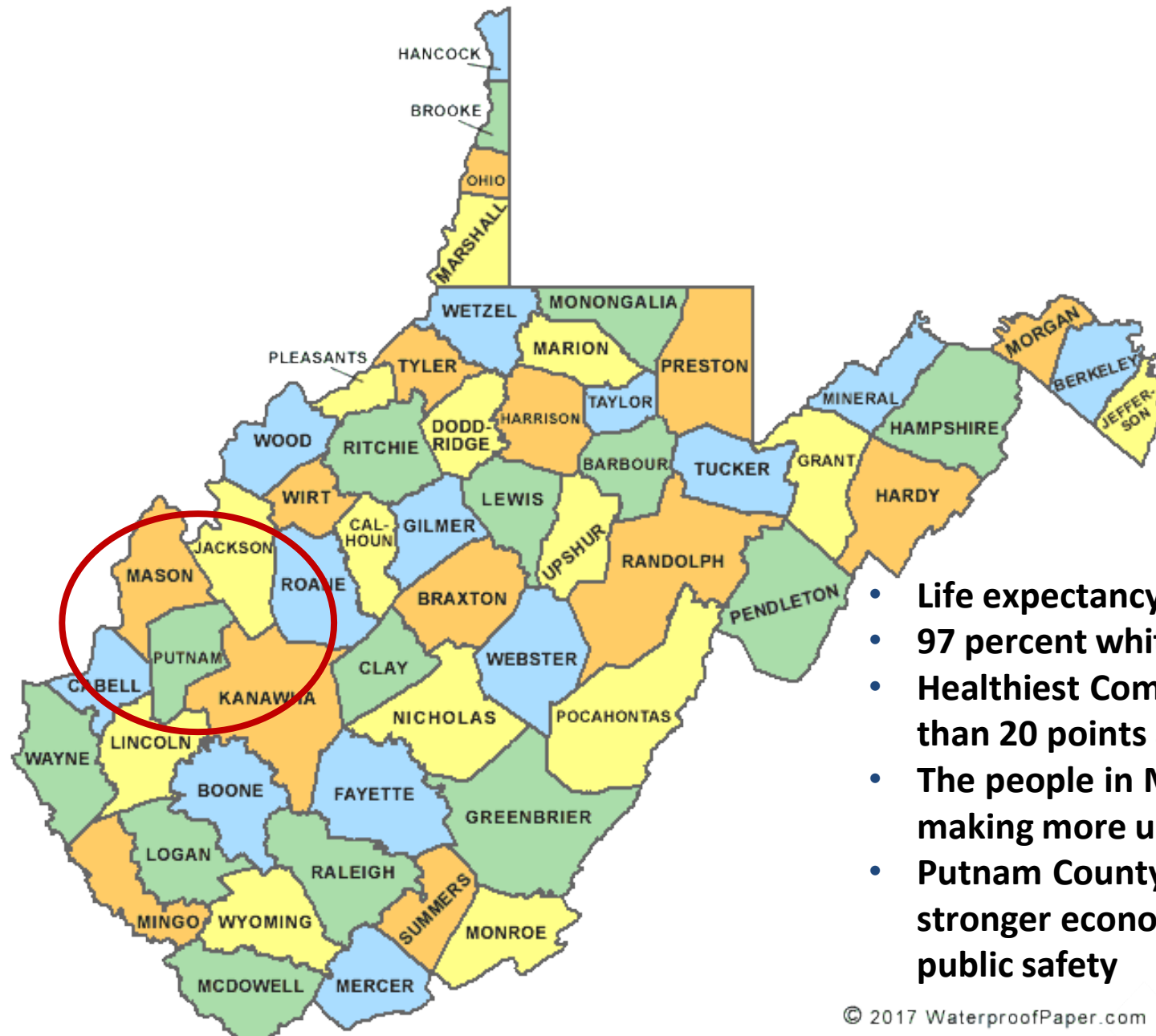
Follow the discussion

#CloseHealthGaps



Zip Code Determines Access To

- High-quality schools
- Job opportunities
- Healthy housing
- Nutritious food
- Safe communities
- Green space
- Toxic exposures
- Quality healthcare
- Good public transit
- Social cohesion
- Social capital



- Life expectancy differs by two years.
- 97 percent white
- Healthiest Communities scores more than 20 points apart
- The people in Mason County are not making more unhealthy choices
- Putnam County has better schools, a stronger economy & spends more on public safety

© 2017 WaterproofPaper.com



Delmar Blvd. Divide in St. Louis, Mo
Blacks More Likely to Have Heart Disease or Cancer







Health Is About Risky Behavior



Tobacco: Leading Preventable Cause of Death





Health Is About Equitable Access To Affordable Nutritious Foods

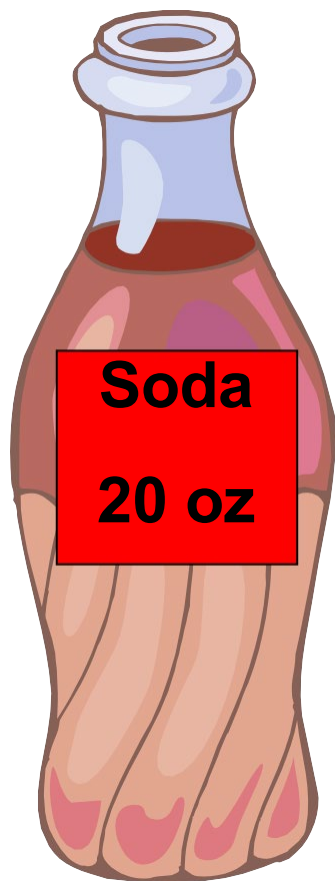




1/18/11 EXINGTON HERALD-LEADER

© Joel Pett.

Health Is About What & How Much We Eat: The Tale Of One Soda



- 17 teaspoons of sugar
- 250 calories
- 4 hrs bicycling to compensate

Many potential solutions

- Consumer education – Product & menu labeling
- Reduce consumption & portion size reduction
- Increase food choices where food is served
- Reduce access in vending machines
 - Increase healthier products water, juices, etc.
- Fiscal incentives
 - Junk food taxes

Health Is About Ensuring Safe Food



Clean Water



And.....Unsafe Water



Health Is About Critical Infrastructure



I 35W Minnesota Bridge Collapse, 2007

Poor Air Quality

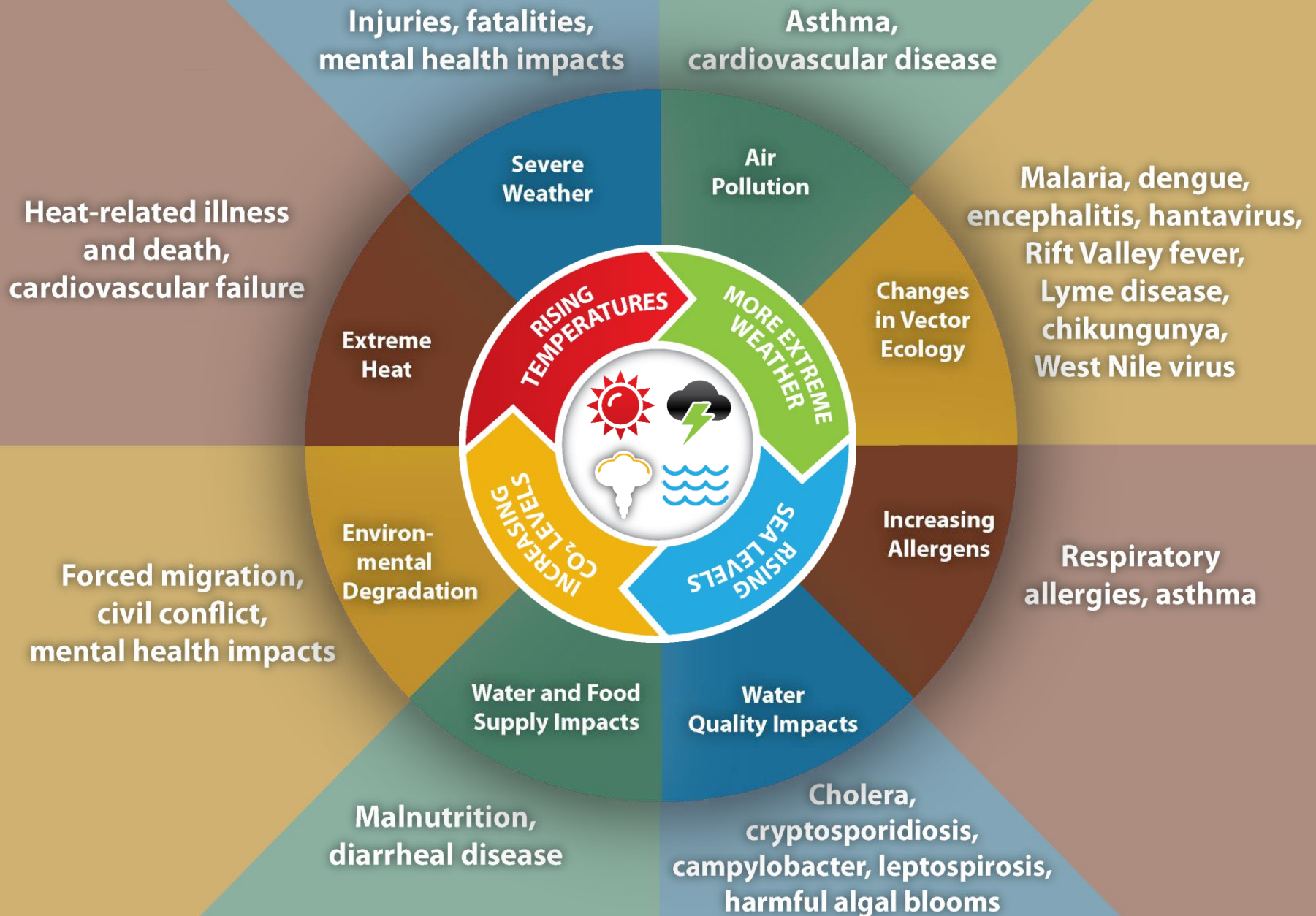


Health Is About Climate Change

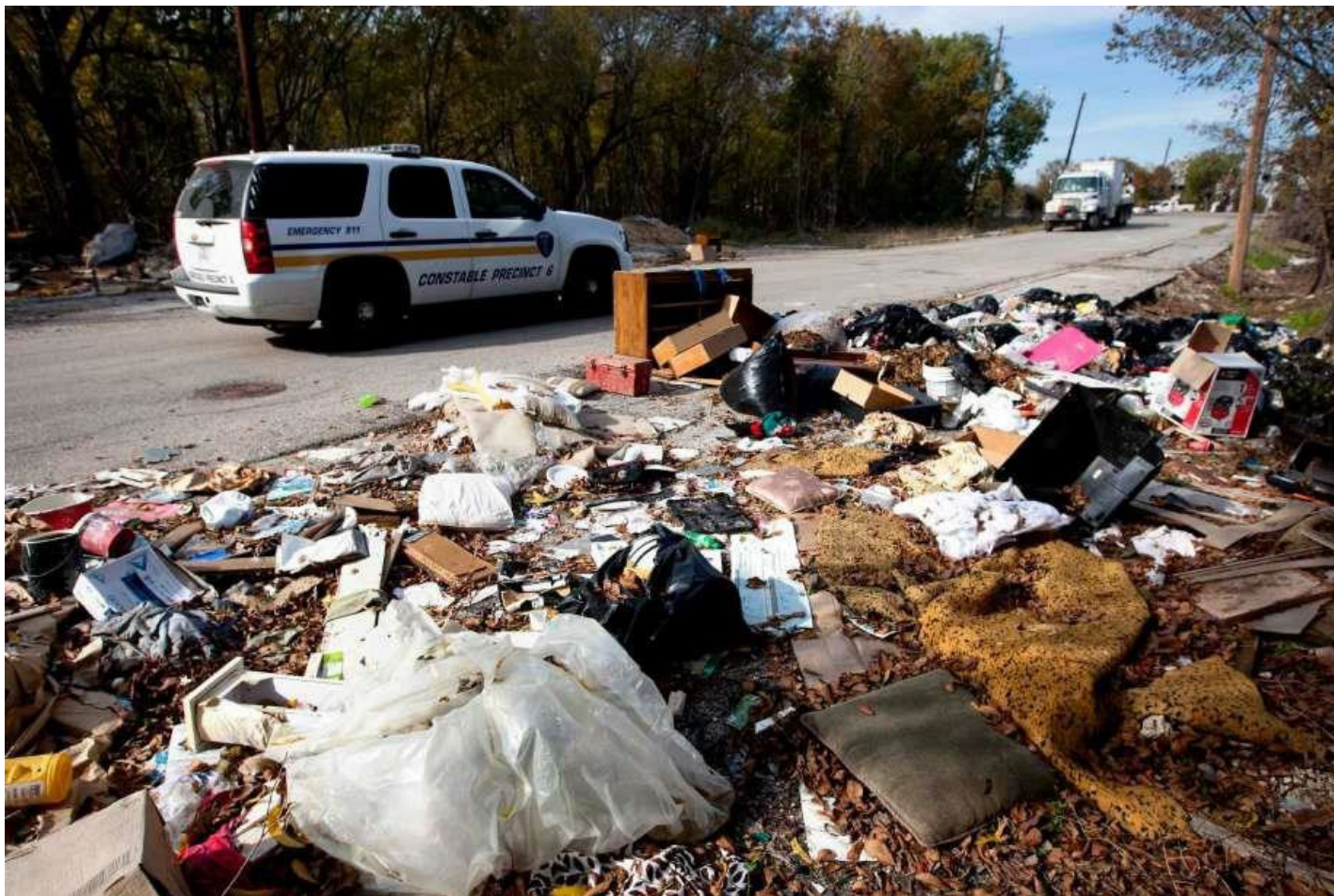
- It is here today
- It is man made
- It is affecting our health now



Impact of Climate Change on Human Health



Health Is About Where We Dump Our Trash



Separate toxins from residential locations
Identify & remediate risky waste sites

Health Is About How We Plan & Build Communities



Health Is About Transportation Systems

Shift from a model that **moves cars** to a active transportation model that **moves people** with health as a co-benefit



Health Is About Places To Play: Addressing Sedentary Lifestyles



- Better school performance
- Better mental health
- Better physical fitness

Access To Broadband Matters



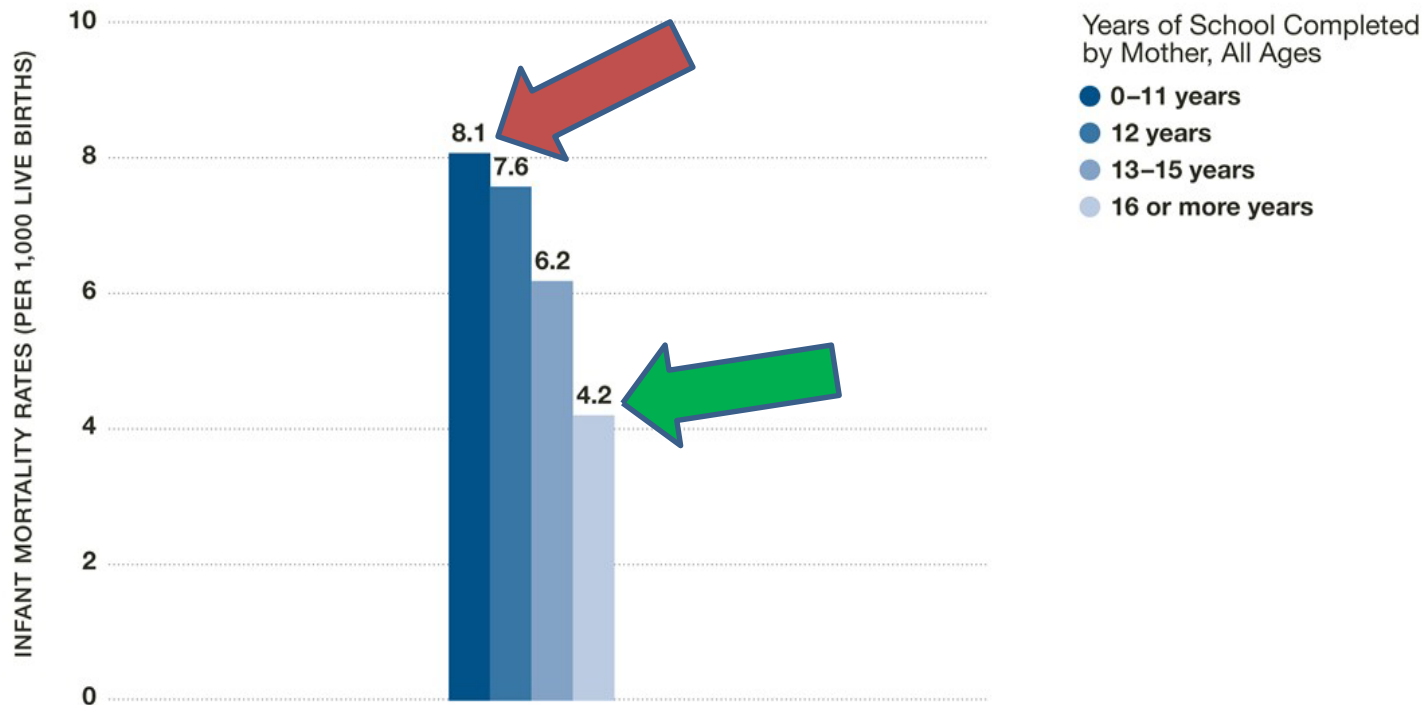
Essential for:

- Education
- Work
- Communication

Broadband deserts are a significant problem

A Mom's Education, A Baby's Chances of Survival

Babies born to mothers who did not finish high school are nearly twice as likely to die before their first birthdays as babies born to college graduates.



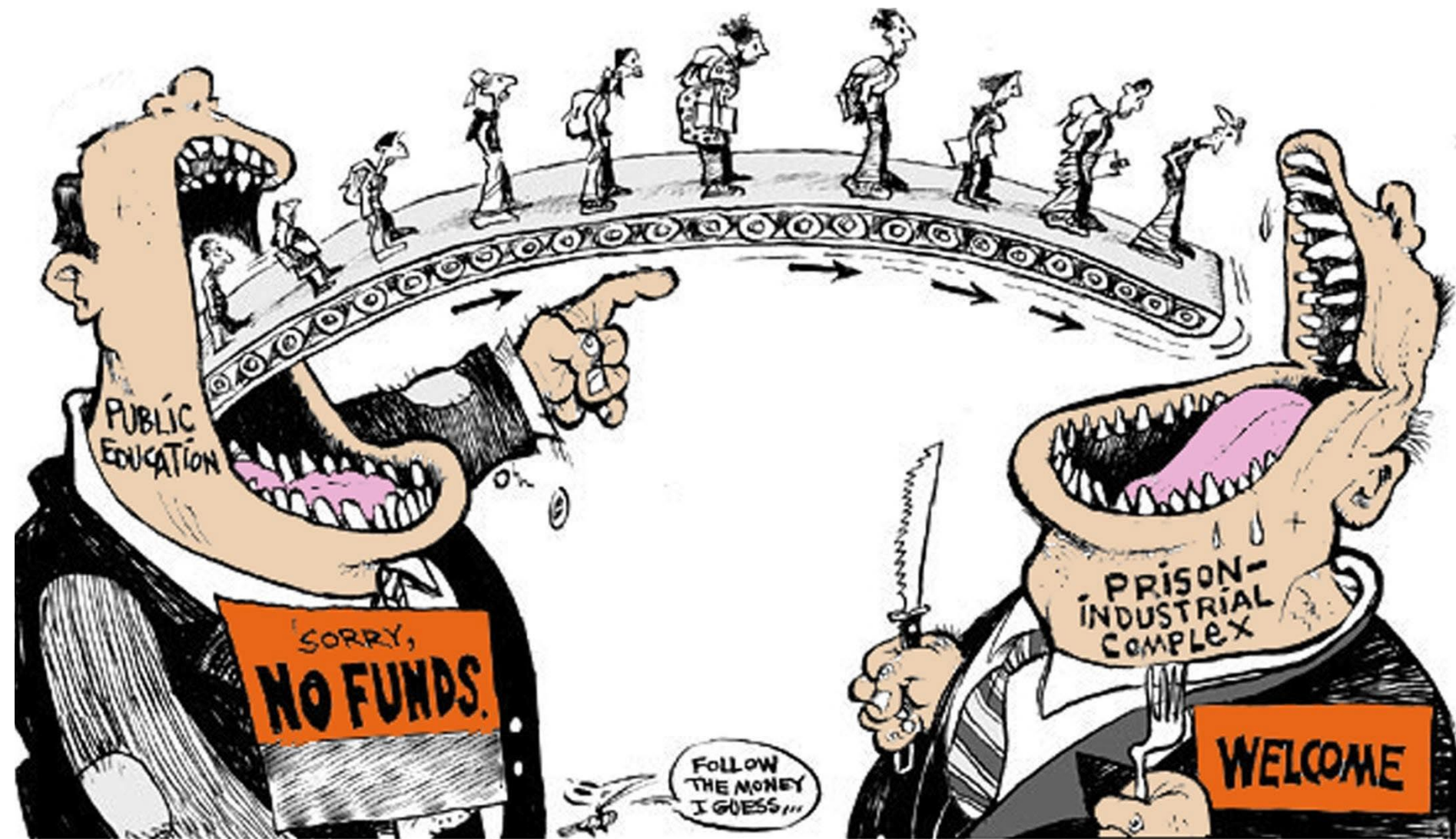
Prepared for the Robert Wood Johnson Foundation by the Center on Social Disparities in Health at the University of California, San Francisco.

Source: Mathews TJ, MacDorman MF. Infant mortality statistics from the 2004 period linked birth/infant death dataset.

National Vital Statistics Reports; vol 55 no 14. Hyattsville, MD: National Center for Health Statistics, 2007.

© 2008 Robert Wood Johnson Foundation

www.commissiononhealth.org





Copyright by Signe Wilkinson

Health Is About External & Internal Stressors









Health Is About Equitable Access To Quality, Affordable Housing







Stacy Kranitz





Homelessness Is A Social Determinant of Health



- **Poor health is a cause of homelessness**
- **14% in homeless health programs are kids**
- **Homeless are 3 - 6 times more likely to be sick**
- **3 - 4 times more likely to die prematurely**
- **High percent without health insurance**

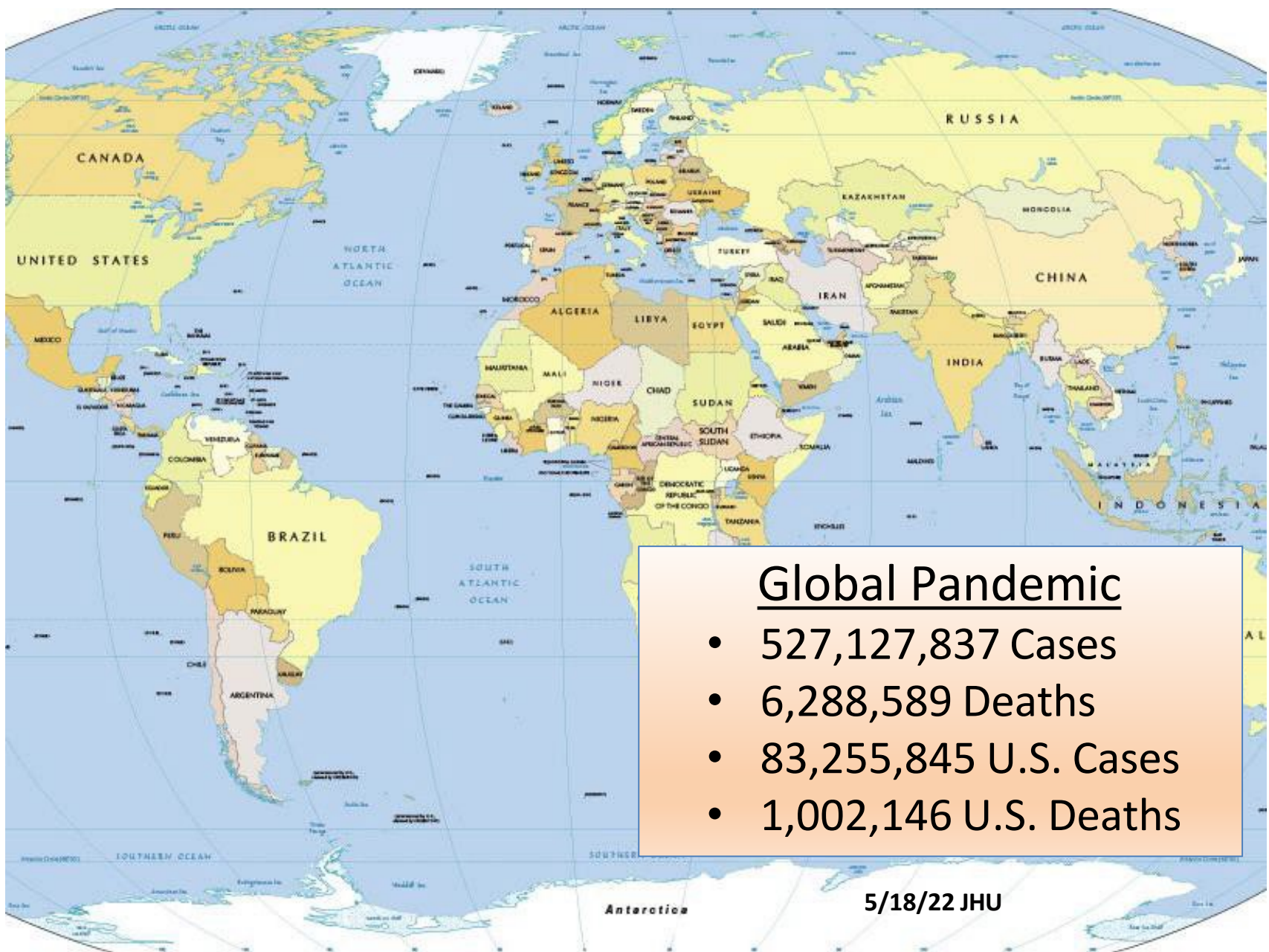
And Income Inequality



Health Is About Broad Community Capacity

- Safe
- Violence free
- Parks/open space
- Walkable
- Bikeable





COVID-19 Cases, Hospitalizations, and Deaths by Race/Ethnicity

Rate ratios compared to White, Non-Hispanic persons	American Indian or Alaska Native, Non-Hispanic persons	Asian, Non-Hispanic persons	Black or African American, Non-Hispanic persons	Hispanic or Latino persons
Cases ¹	1.9x	0.7x	1.1x	1.3x
Hospitalization ²	3.7x	1.1x	2.9x	3.2x
Death ³	2.4x	1.0x	1.9x	2.3x

Race and ethnicity are risk markers for other underlying conditions that affect health, including socioeconomic status, access to health care, and exposure to the virus related to occupation, e.g., among frontline, essential, and critical infrastructure workers.

How to Slow the Spread of COVID-19



Wear a mask



Stay 6 feet apart



Avoid crowds and poorly ventilated spaces



Wash your hands



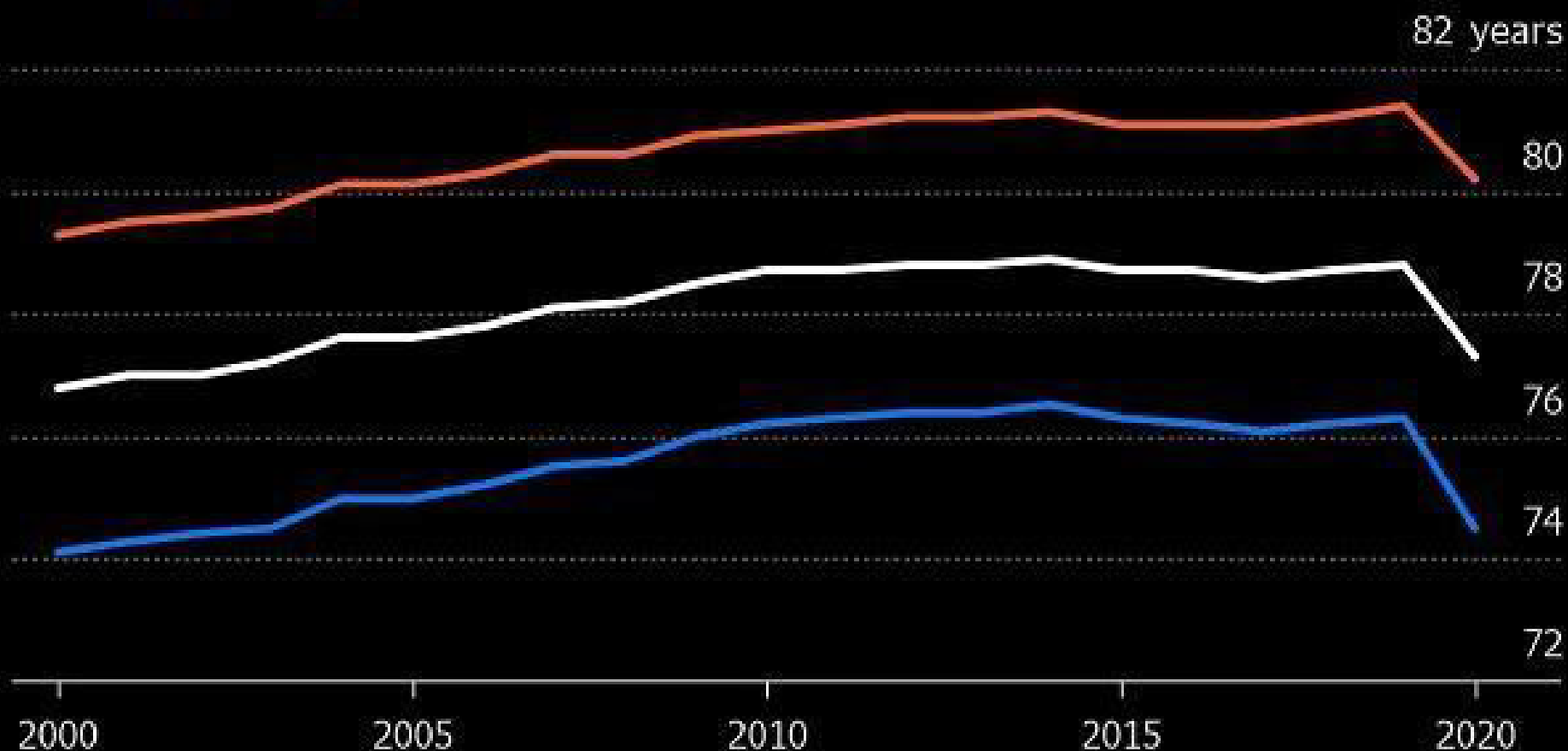
cdc.gov/coronavirus

CS319360-A 02/12/2021

U.S. Life Expectancy Declines

The drop in 2020 was the sharpest since World War II

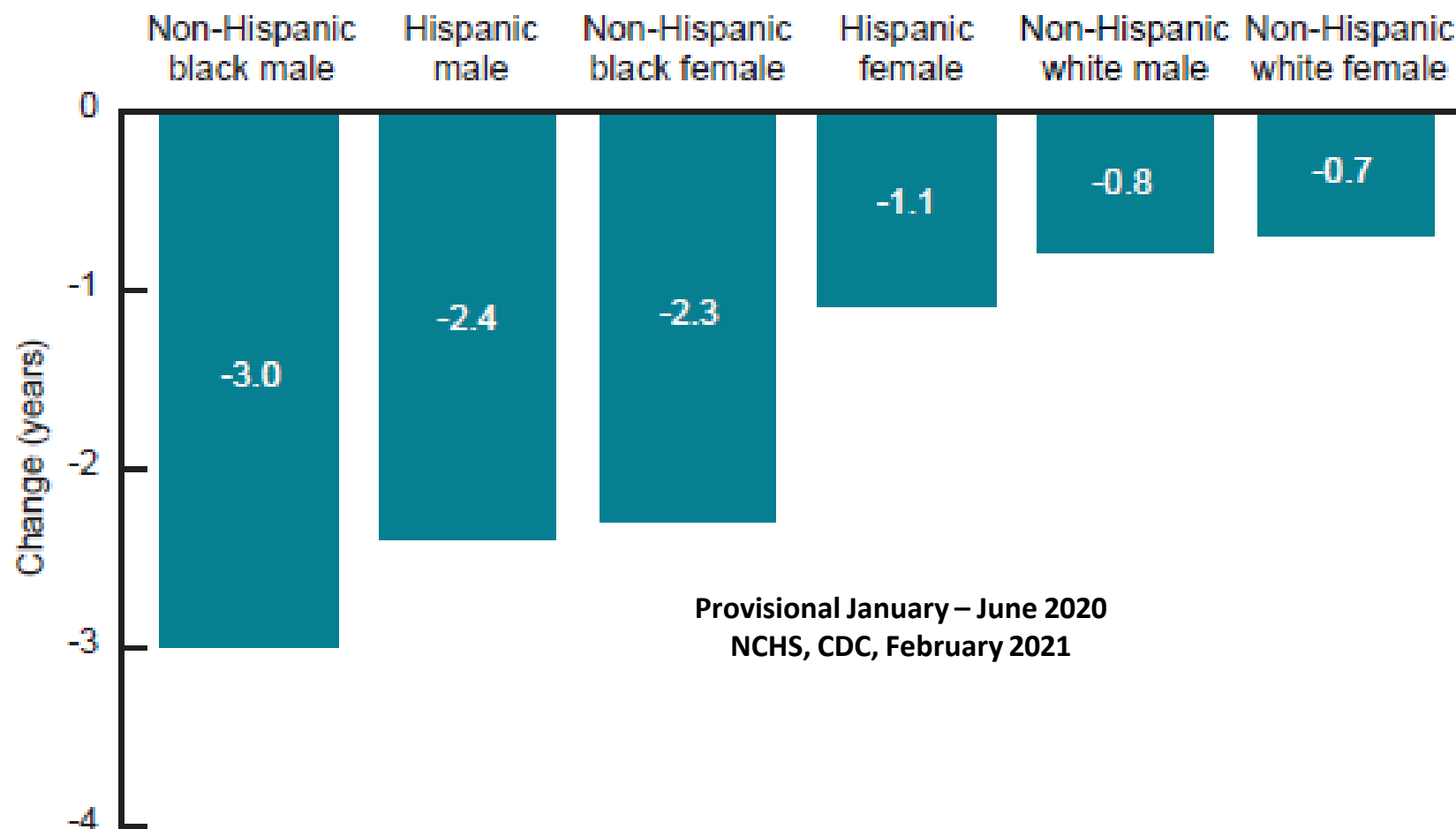
— Total — Male — Female



Source: CDC National Center for Health Statistics

Bloomberg

Figure 4. Change in life expectancy at birth, by Hispanic origin and race and sex: United States, 2019 and 2020



Reasons For Disparities

- Exposure
 - Public facing occupations
 - Delayed sheltering in place
- Susceptibility
 - Prevalence of chronic disease
- Social determinates
 - Lack of paid sick leave
 - Poverty
 - Housing situation



A New Social Compact

An implicit agreement among the members of a society to cooperate for social benefits, this may involve sacrificing some individual freedoms for the good of the entire population.

The Moral Basis For This

“We value all people equally. We optimize the conditions in which people are born, grow, live, work, learn and age. We work with other sectors to address the factors that influence health, including employment, housing, education, health care, public safety and food access. We name racism as a force in determining how these social determinants are distributed.”

APHA Core Value

Equality



The assumption is that **everyone benefits from the same supports**. This is equal treatment.

Equity



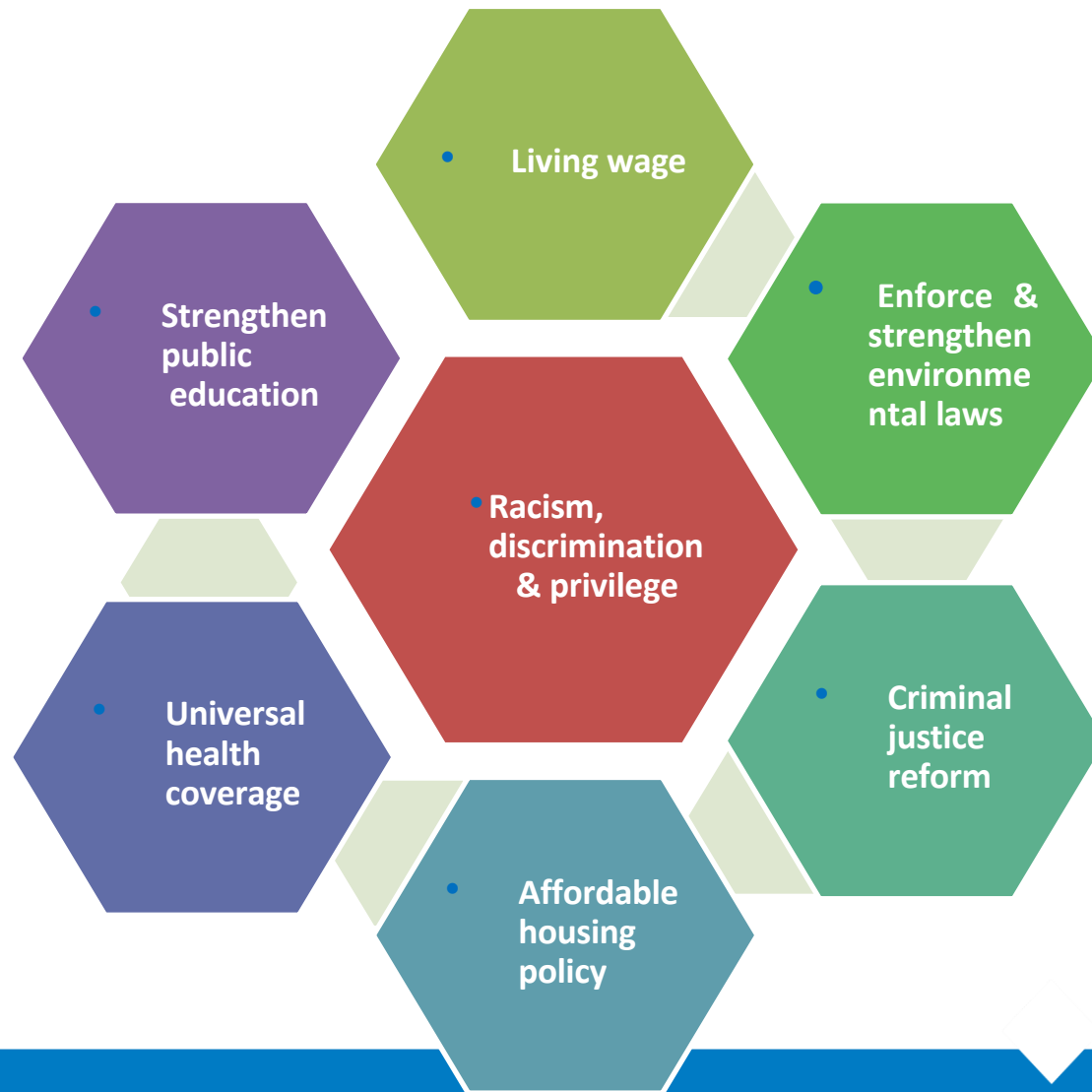
Everyone gets the supports they need (this is the concept of "affirmative action"), thus producing equity.

Justice



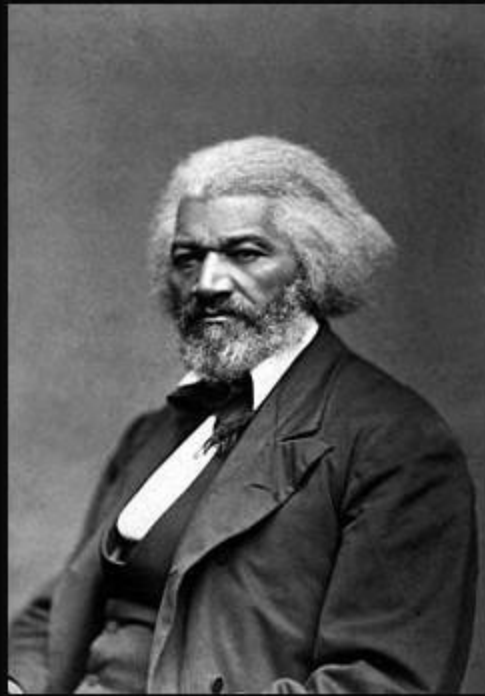
All 3 can see the game without supports or accommodations because **the cause(s) of the inequity was addressed**. The systemic barrier has been removed.

The New Social Compact



Creating A New Social Compact

- Build a grassroots advocacy base
 - Led by local leaders
 - Build trust with personal bonds
 - Put people out front with lived experiences
 - Engage the next generation
- Use multiple strategies tailored to local needs
- Engage the business sector as a economic issue
- Change hearts & minds in the vast middle
- Be ferocious, today's policy environment is hostile



Where justice is denied, where poverty is enforced, where ignorance prevails, and where any one class is made to feel that society is an organized conspiracy to oppress, rob and degrade them, neither persons nor property will be safe.

(Frederick Douglass)

izquotes.com



About APHA

APHA is a global community of public health professionals and the collective voice for the health of the public. APHA is the only organization that combines 140 years of perspective, a broad-based constituency and the ability to influence federal policy to advocate for and improve the public's health.

- Founded – April 18, 1872
- 501C(3) & Nonpartisan
- Over 50,000 individual & affiliate members

